

WEEZIDOT

BLUETOOTH TEMPERATURE AND HUMIDITY DATALOGGER

PLUG&TRACK
by PROGES PLUS

DESIGNED FOR WEEZIAPP & WEEZICLOUD 

DESCRIPTION

WeeziDot is a Bluetooth wireless temperature and humidity logger ideal for temperature control in transport and storage of sensitive products (transport of vaccines or biological samples, control of refrigerators or freezers...).

It measures temperatures from -40 to +85°C and 0 to 100% RH with an accuracy of $\pm 0.5^{\circ}\text{C}$ and $\pm 4\%$ RH.



BLUETOOTH



FREE APP

TECHNICAL SPECIFICATIONS

Reference	WeeziDot T - DOT0001	WeeziDot TH - DOT0003
Measurement range	-40/+85°C	-40/+85°C - 0/100%
Accuracy	$\pm 0,5^{\circ}\text{C}$	$\pm 0,5^{\circ}\text{C}$ - 4% RH
Resolution	0,1°C	0,1°C - 0,1% RH
Sample rate	1 minute to 12 hours	1 minute to 12 hours
Data storage	20 000 readings	6000 readings
Battery	User replaceable CR2477	User replaceable CR2477
Battery shelf life	Up to 5 years	Up to 5 years
Communication	Bluetooth 4.3 - Up to 60 meters	Bluetooth 4.3 - Up to 60 meters
Dimensions	\varnothing 38 mm, 15 mm thick	\varnothing 38 mm, 15 mm thick
Casing	ABS	ABS
Weight	16 gr	16 gr
Certification	CE / FCC - ROHS	CE / FCC - ROHS

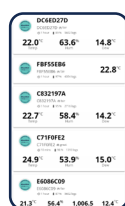


WEEZIDOT SOLUTION SUITE

The free WeeziApp mobile application allows programming and reading from an Android or iPhone smartphone. Data can be archived, shared and centralized on the WeeziCloud web application.



WeeziDot



WeeziApp

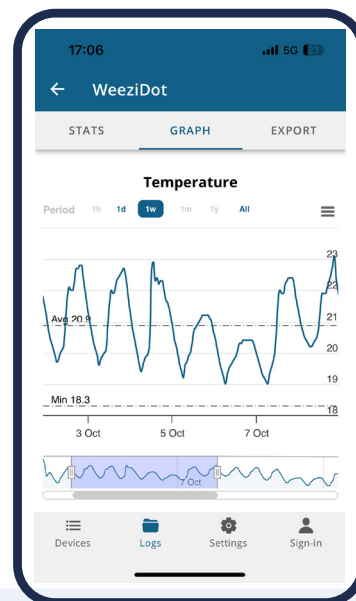


WeeziCloud

DESCRIPTION

WeeziApp is a free mobile application designed for both iPhone and Android devices. It enables quick and efficient interaction with WeeziDot Bluetooth temperature and humidity loggers.

With WeeziApp, you can easily program WeeziDot loggers or read their data. In just seconds, the app displays a detailed temperature graph, making it ideal for real-time monitoring and data collection on the go.



READING YOUR WEEZIDOT LOGGERS

WeeziApp provides comprehensive features for reading data from WeeziDot loggers. It displays all WeeziDot devices within Bluetooth range and quickly generates a graph.

- Display all nearby **WeeziDot loggers** within **Bluetooth range**.
- **Interactive graph** with **zoom functionality** for the **last hour, day, week, or month**.
- Show **minimum, maximum, and average values**.
- Export the graph as a **PDF** and send it via **email**.
- Export data in **CSV** for **Excel**.
- Save data to **WeeziCloud.com** (*).
- **Store readings** directly on the **phone** for offline access.
- Available in **multiple languages** : French, English, German, Spanish, Italian, Dutch, Chinese, Japanese.

CUSTOMIZABLE PROGRAMMING FOR WEEZIDOT

WeeziApp offers powerful features for programming WeeziDot loggers :

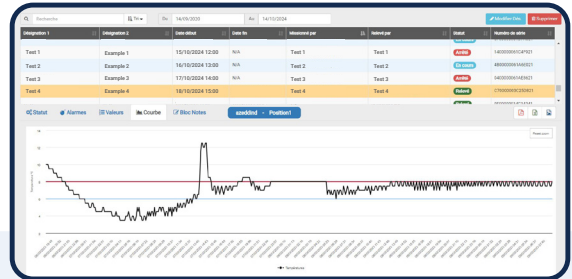
- **Assign a custom name** to each WeeziDot for easy identification.
- Set the **sample rate**, ranging from every **1 minute to 12 hours**.
- Set high and low thresholds (*).
- **Send an email notification to the recipient** when the WeeziDot is programmed (*).
- **Airplane Mode** for air transport.

These features make it easy to customize the WeeziDot settings for specific applications and environments. (*) *Requires a WeeziCloud account.*



DESCRIPTION

WeeziCloud is a web platform designed to provide a centralized view of all the data collected from WeeziDot loggers through WeeziApp. It offers several key features, including the ability to share data across multiple users via the web and securely archive it in the cloud.



KEY FEATURES

- Share data on the web between **multiple users**.
- Archive data in a **centralized cloud**.
- Keep data online **for 3 years**.
- Display **temperature graphs** with high and low thresholds.
- Display **value lists** with min, max, average and MKT.
- View a list of **temperature excursions** based on alarm settings.
- Print graphs ,value lists and list of alarms.
- Export data to Excel.
- Create unlimited number of users.
 - Choose user preferences (Administrators, Users).
- Receive **email notifications** when a WeeziDot is programmed or read.
- Correct values based on calibration certificate data.
- Conforms FDA – CFR21 part 11.
- Available in multiple languages : French, English, German, Spanish.

EMAIL NOTIFICATIONS FOR INSTANT UPDATES

WeeziCloud' s **email notification** feature is particularly valuable in **cold chain logistics**, ensuring both **shippers** and **recipients** are informed when a **WeeziDot** is **programmed** or **read**.

This communication helps keep all parties **updated** about the status of **temperature-sensitive shipments**, providing crucial information **before** and **after transit** to ensure **proper handling**.

GLOBAL DATA SHARING FOR MULTIPLE USERS

WeeziCloud allows **multiple users** to access the same **data**, making it easy to **share information** between **shippers** and **recipients**, no matter where they are in the world.

This feature ensures that all parties involved in the **cold chain process** can **monitor temperature data** and receive **important updates**, improving **coordination** and **transparency** across different locations.